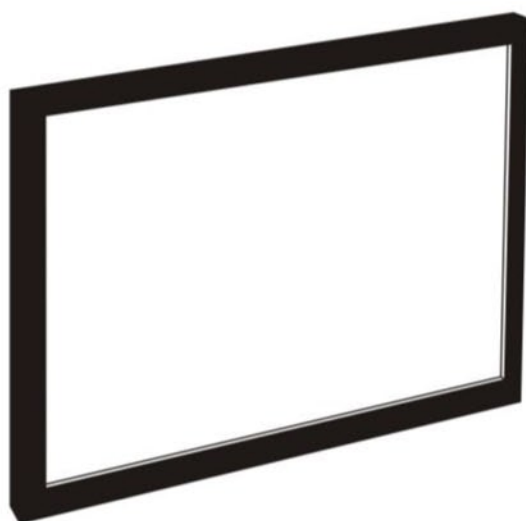


## Cineplus Fixed Frame Screen User manual



- Innovative Design
- Easy to Setup
- Clear Projection Image

Thank you for choosing our screen. Please read this manual carefully beforehand, and keep this manual for reference in future.

Thank you for choosing our screen... Please read through the user manual before using the screen. Correct usage and maintenance could insure a longer life for the product.

### Instruction

- Please pay attention to the front & rear side of the fabric.
- In order to obtain the best projection image:
  - 1>. Please do not touch the screen surface by hand.
  - 2>. Please do not write on the screen surface.
  - 3>. Please do not scratch the screen surface by hand or sharp object.
  - 4>. Please do not clean the screen surface with corrosive detergent.
- Handle this product by care.

### Feature

- **Fashion**  
Fashionable & Classical appearance with flannelet surface.
- **Design**  
Even distribution of fabric stress in order to avoid "V" shape appearance, keeping fabric as a flat surface.
- **Clear picture with details.**  
High quality fabric with matte surface provide the best projection image with details.
- **Easy Setup**  
Simply insert the "movable" dome shaped bottom into pre-formed holes on fabric. No other clips are necessary. Movable hanging bracket increase flexibility.
- **Usage**  
Suitable to use in home theatre; show rooms; entertainment center... etc.

### Part diagrams

Aluminium Bar Hori: (2pcs) (See table2)

Aluminium Bar Vert: (2pcs) (See table2)

Plastic Rod (long)  $\Phi$  5mmx2pcs (See table2)

Plastic Rod(short)  $\Phi$  5mmx2pcs (See table2)

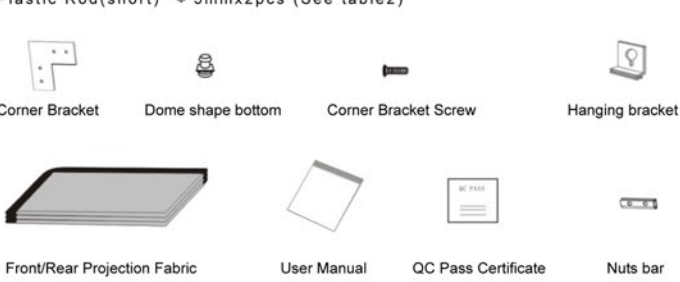


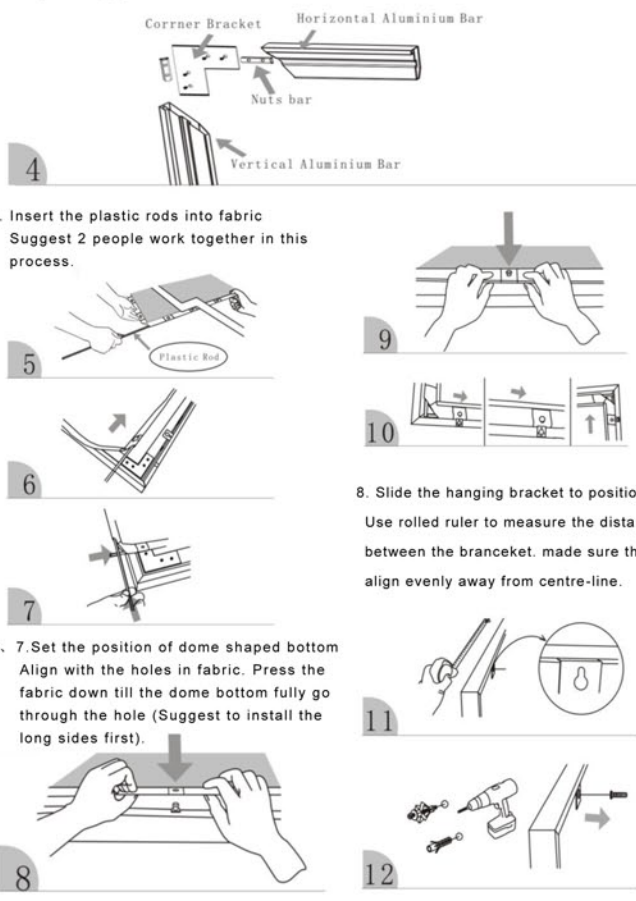
Table 2: Specification

Scale	Size (Inches)	Gain	Projection area WxH(mm)	Total length L (mm)	Total Height F (mm)	B1 (mm)	B2 (mm)	C1 (mm)	C2 (mm)	Plastic Rod (long) (mm)	Plastic Rod (short) (mm)
4:3	72"	1.0	1463x1097	1573	1207	55	55	55	55	1573	1207
4:3	84"	1.0	1707x1280	1817	1390	55	55	55	55	1817	1390
4:3	100"	1.0	2302x1524	2142	1634	55	55	55	55	2142	1634
4:3	120"	1.0	2438x1829	2548	1939	55	55	55	55	2548	1939
4:3	150"	1.0	3048x2286	3208	2446	86	86	86	86	3208	2446
16:9	97"	1.0	2147x1207	2257	1317	55	55	55	55	2257	1317
16:9	100"	1.0	2214x1245	2324	1355	55	55	55	55	2324	1355
16:9	106"	1.0	2347x1319	2457	1429	55	55	55	55	2457	1429
16:9	110"	1.0	2438x1369	2548	1479	55	55	55	55	2548	1479
16:9	120"	1.0	2656x1494	2766	1604	55	55	55	55	2766	1604
16:9	150"	1.0	3321x1867	3481	2027	86	86	86	86	3481	2027

2. Unfold the frame until the latch on the hinge "clicks"

### Installation

4 bars by using the corner bracket, nuts bar and screw as showed in diagram. Apply to all 4 corners.

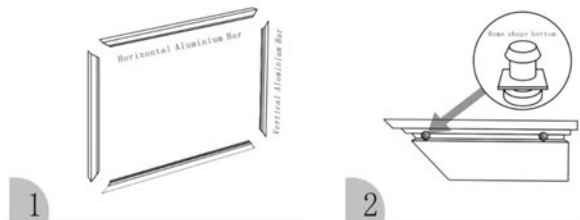


### Specification

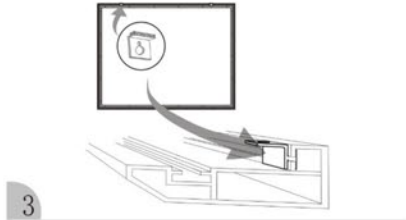


### Installation

1. Put the 4 bars (2 long & 2 Short) Together to form a rectangle Framework.
2. Insert the dome shaped bottom (accessory 7) into the slot on aluminium bars. Quantity depends on the holes on each side of fabric.



3. Insert the hanging bracket into the slot of long aluminium bar.



### Notice

**Wrong**

- Prohibited: Touching the screen surface.
- Prohibited: Writing on the screen surface.
- Prohibited: Climbing on the screen.
- Prohibited: Hanging objects on the screen.

**Correct**

- Correct: Covering the screen with a cloth after use.

Please cover the screen with cloth after used. This will protect it from dust, dirt.

**Warning**

- Misuse of the screen may cause damage to the screen, or injury to persons.
- Mount the screen on wall which can sustain the weight only.
- Do not disassemble the screen or by qualify technician only.
- Do not hang any object on the screen.

Note: We are disclaimer that it happen to operational errors; disasters or irresistible reasons.

